



Canons Road, Ware SG12 0BT

Guide price £210,000

Taylor Phelps



1



1

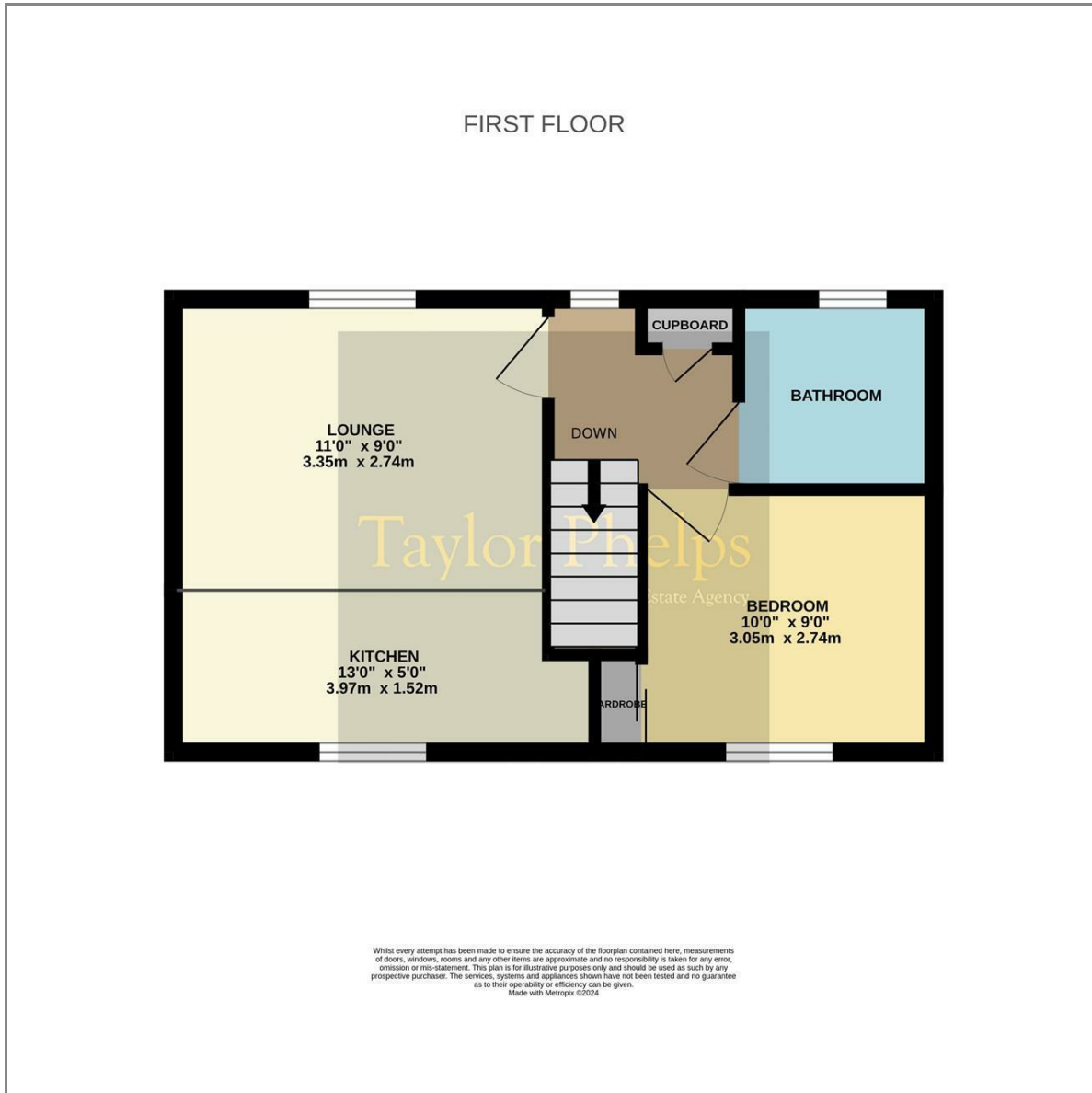
Taylor Phelps

Estate Agency

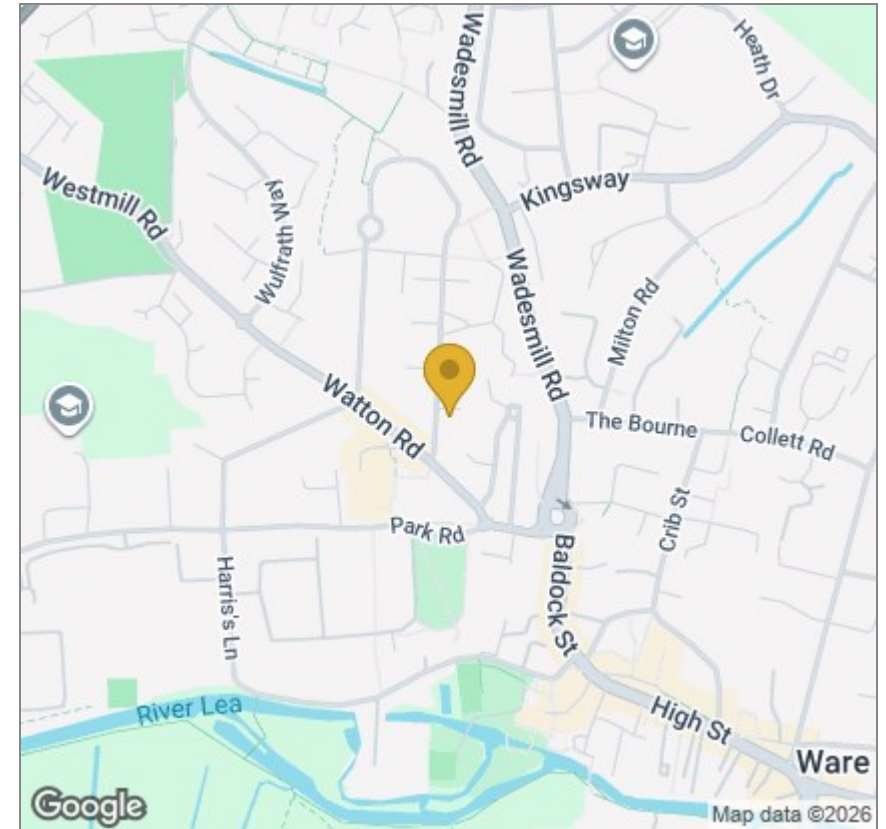
*Taylor Phelps are pleased to offer this one bedroom first floor maisonette positioned close to Ware high street and station. This property benefits from its own front door and a driveway providing off street parking. Available Chain Free*



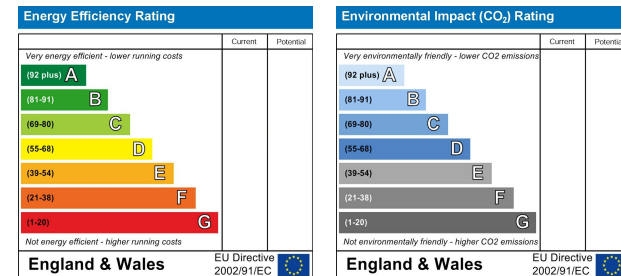
# Floor Plan



# Area Map



# Energy Efficiency Graph



These particulars, whilst believed to be accurate are set out as a general outline only for guidance and do not constitute any part of an offer or contract. Intending purchasers should not rely on them as statements of representation of fact, but must satisfy themselves by inspection or otherwise as to their accuracy. No person in this firm's employment has the authority to make or give any representation or warranty in respect of the property.

01920 459000

hello@taylorphelps.co.uk

5 Frenchs Yard, Amwell End, Ware, Hertfordshire, SG12 9HP

[www.taylorphelps.co.uk](http://www.taylorphelps.co.uk)

